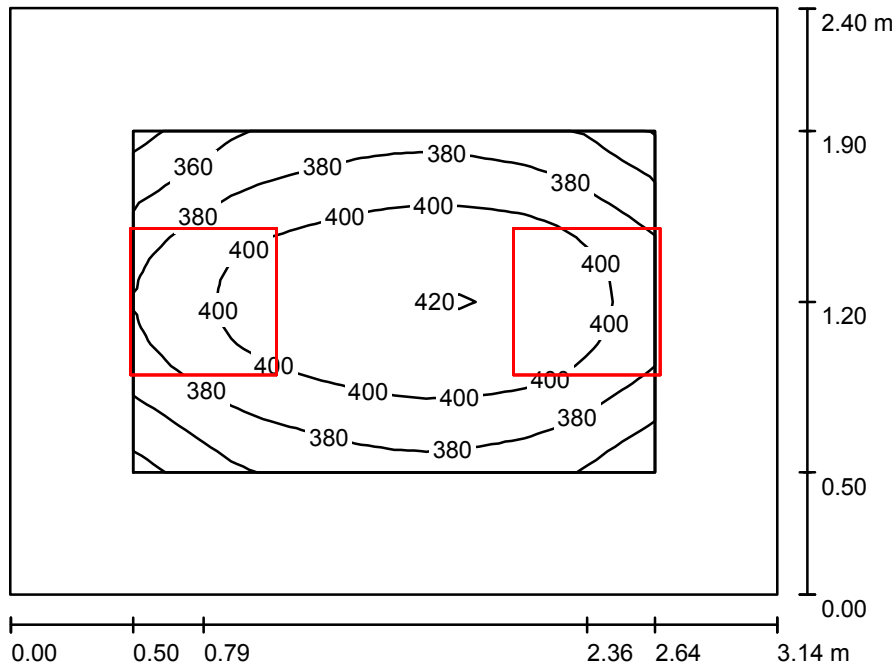


Operator
Telephone
Fax
e-Mail

2.12 / Summary



Height of Room: 3.100 m, Mounting Height: 3.100 m, Maintenance factor: 0.90

Values in Lux, Scale 1:31

Surface	ρ [%]	E_{av} [lx]	E_{min} [lx]	E_{max} [lx]	u_0
Workplane	/	390	336	421	0.860
Floor	20	247	189	291	0.764
Ceiling	70	105	70	141	0.666
Walls (4)	50	216	86	573	/

Workplane:

Height: 0.800 m
Grid: 16 x 16 Points
Boundary Zone: 0.500 m

Illuminance Quotient (according to LG7): Walls / Working Plane: 0.622, Ceiling / Working Plane: 0.270.
Proportion of points with less than 400 lx (for IEQ-7): 64.06%.

Luminaire Parts List

No.	Pieces	Designation (Correction Factor)	Φ (Luminaire) [lm]	Φ (Lamps) [lm]	P [W]
1	2	OCTA-LIGHT PLC OCTL-OLS-30-RNWR (1.000)	3040	3100	28.0
Total:			6080	6200	56.0

Specific connected load: $7.43 \text{ W/m}^2 = 1.91 \text{ W/m}^2/100 \text{ lx}$ (Ground area: 7.54 m^2)